

# COVERS ALL YOUR NEEDS

AGRICULTURE





# A WIDE PRODUCT RANGE FOR EVERY APPLICATIONS

**MACHINERY**



**HAY AND STRAW**



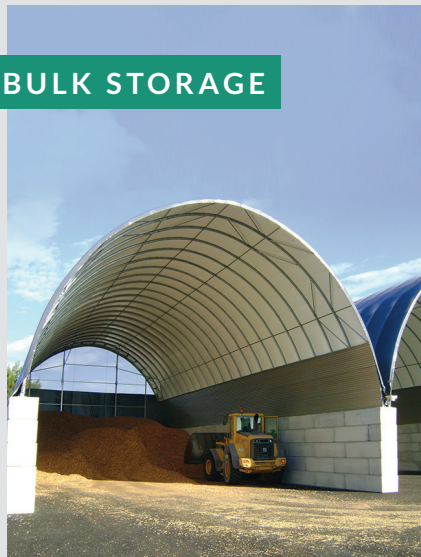
**MATERIAL**



**BIG-BAGS**



**BULK STORAGE**



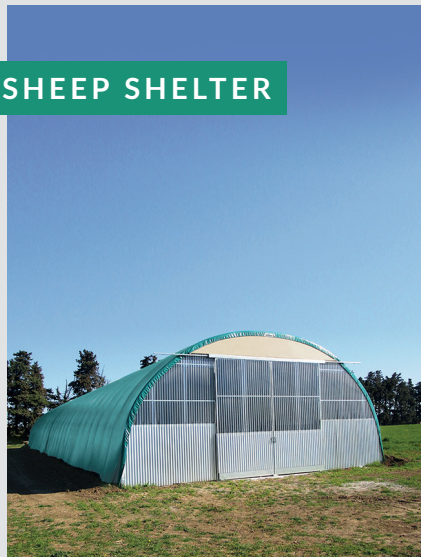
**FIREWOOD**



**CATTLE DAIRY  
FARMING**



**SHEEP SHELTER**



**CATTLE BREEDING  
NURSING**



The Shelterall® may require prior approval or a construction permit before assembly: The buyer is required to check with the relevant town planning authorities.

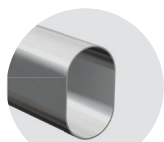
## Optimised volumes

Width varying from 14' 9" to 82'. The bend of the Shelterall® arches provides an easy movement around the sides.

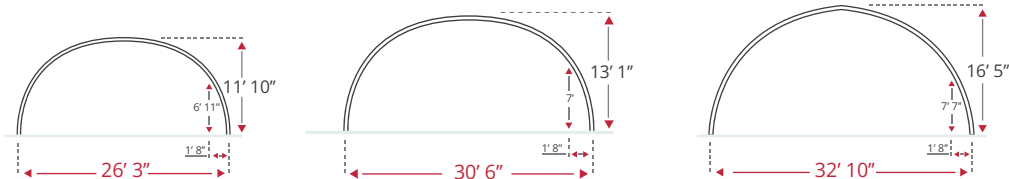
## Adaptable

Shelterall® is quick to assemble and dismantle thanks to its assembly system. The simple arch range is designed for an anchoring system without foundation.

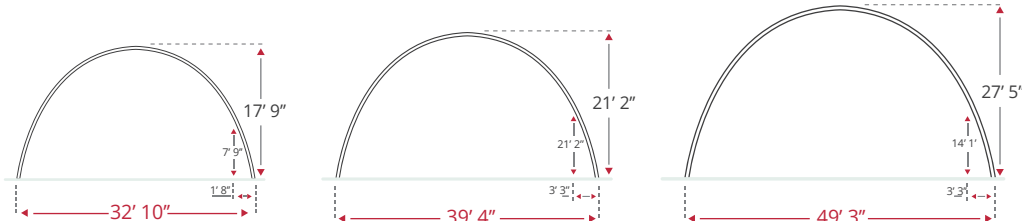
### SIMPLE ARCH



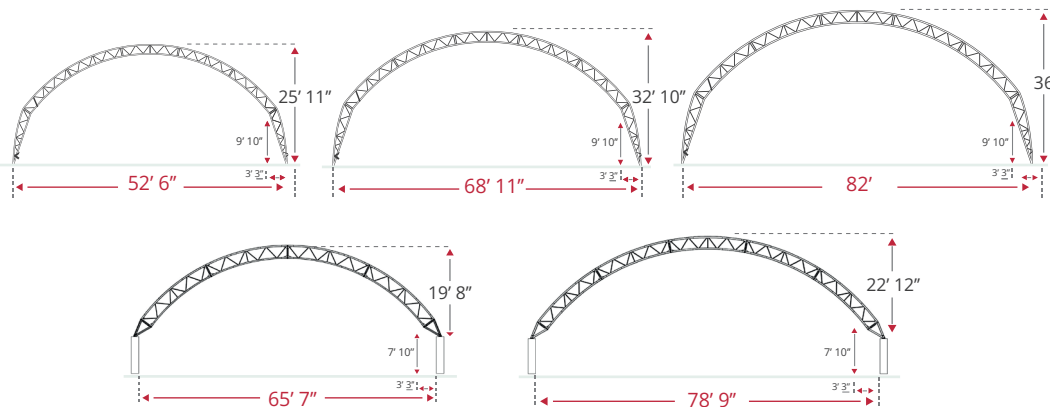
OV90



OV130



### TRUSS ARCH



Colours cover:



Beige



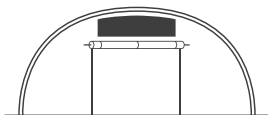
Green/White



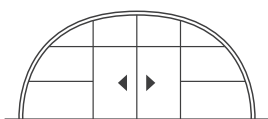
Grey/White

## CUSTOM MADE OPTIONS

### GABLES

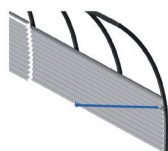


Gable and Roll up door

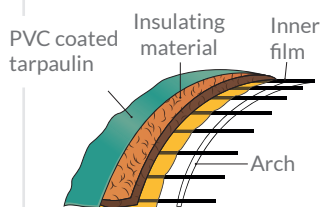


Solid gable and double sliding door

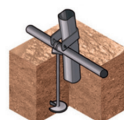
### SIDE PROTECTION STEEL SHEETING



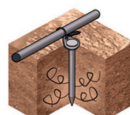
### INSULATION



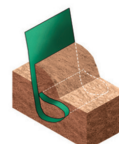
### ANCHORING



Screw-in anchor



Hook anchor



Buried tarpaulin

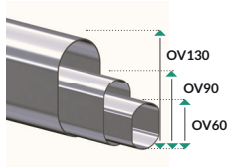


Anchoring bolt

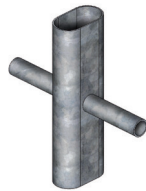


# RICHEL TECHNOLOGY

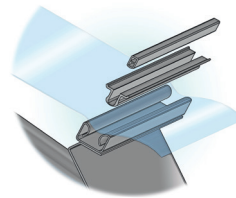
The Shelterall® benefits from the technology and reliability of the Richel Group, the number one greenhouse manufacturer in Europe. Its design and manufacture are SOCOTEC approved. Its galvanised steel frame (as per the NF N 10346 Sendzimir method) complies with the European standard NF EN 13031-1. Its PVC coated tarpaulin benefits from 10-year warranty\*.



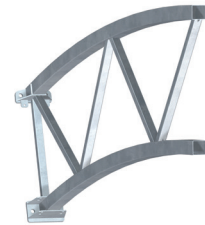
Evolution of sections of ovalized profiles



The weld-free cross assembly, patented by Richel (patent No. 2954960).



Richel clips to attach the tarpaulin and keep it tightly drawn.



The truss arch enlarge the span width by optimizing material. The best technical choice for spans greater than 15m.

\*See general sales conditions



## INDUSTRIAL PRODUCTION SITE, EYGALIÈRES FRANCE

RICHEL GROUP® designs, manufactures and develops complete greenhouse and shelter solutions for agriculture, construction and industry all over the worldIts industrial.

Its expertise has enabled it to develop for 20 years in other activities that have become essential for the group, such as storage solutions represented by the SHELTERALL® (storage shelters) and TOUTABLOC® (concrete block walls and huts brands).

[www.shelterall.eu](http://www.shelterall.eu)



Quartier de la Gare - 13810 Eygalieres - France  
Tel.: +33 (0)4 90 95 14 68  
E-Mail: [shelterall@richel.fr](mailto:shelterall@richel.fr)  
[www.shelterall.eu](http://www.shelterall.eu)

Our distributor: